

# etc.venues Marble Arch

86 Edgware Road, London W2 2EA

MEETINGS & EVENTS



etc.venues Marble Arch is located just off Oxford Street in London and features 22 meeting rooms of varying sizes that can accommodate anywhere from 10 guests up to 140. Spanning more than 23,000 square-feet across three floors, it is an ideal location for corporate and public trainings, board meetings, internal meetings, courses, and workshops.

This destination features a sophisticated design with stunning parquet flooring, exposed brick, and vibrant interjections of colour. etc.venues Marble Arch offers select branding and signage opportunities, in-house communal catering-of-the-day, in-room plug-and-play technology, and shared hospitality resources.

The venue is in close proximity to Hyde Park and is easily accessible via public transport.

22  
MEETING ROOMS

140  
MAX ROOM CAPACITY

23,600  
SQUARE FEET



HIGH SPEED  
WIFI



STATE OF THE ART  
TECHNOLOGY



FLEXIBLE MEETING  
& EVENT SPACE



EVENT PLANNING  
SERVICES



ON-SITE  
GOURMET CHEF



PREMIUM  
DESIGN

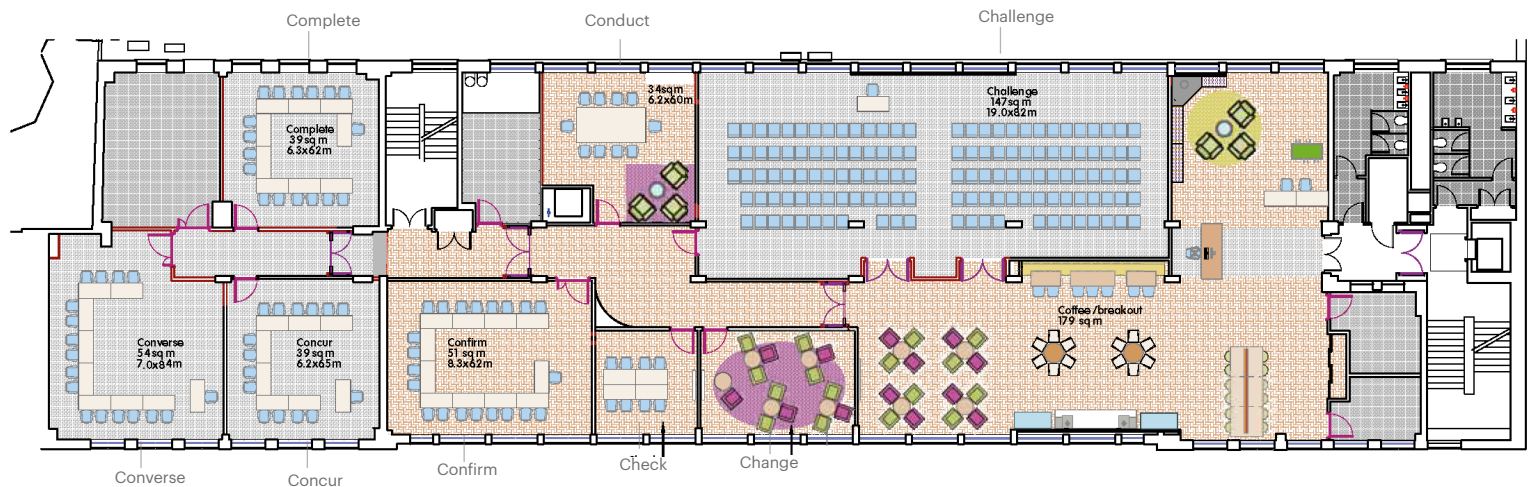


This collateral is based on the latest information reasonably available and may be updated on a periodic basis. Please check with your Convene Account Manager for the latest information.

convene | etc.venues  
CONVENE.COM | + 44 (0)80 0640 6630

## Floorplan & Capacities

### 1ST FLOOR

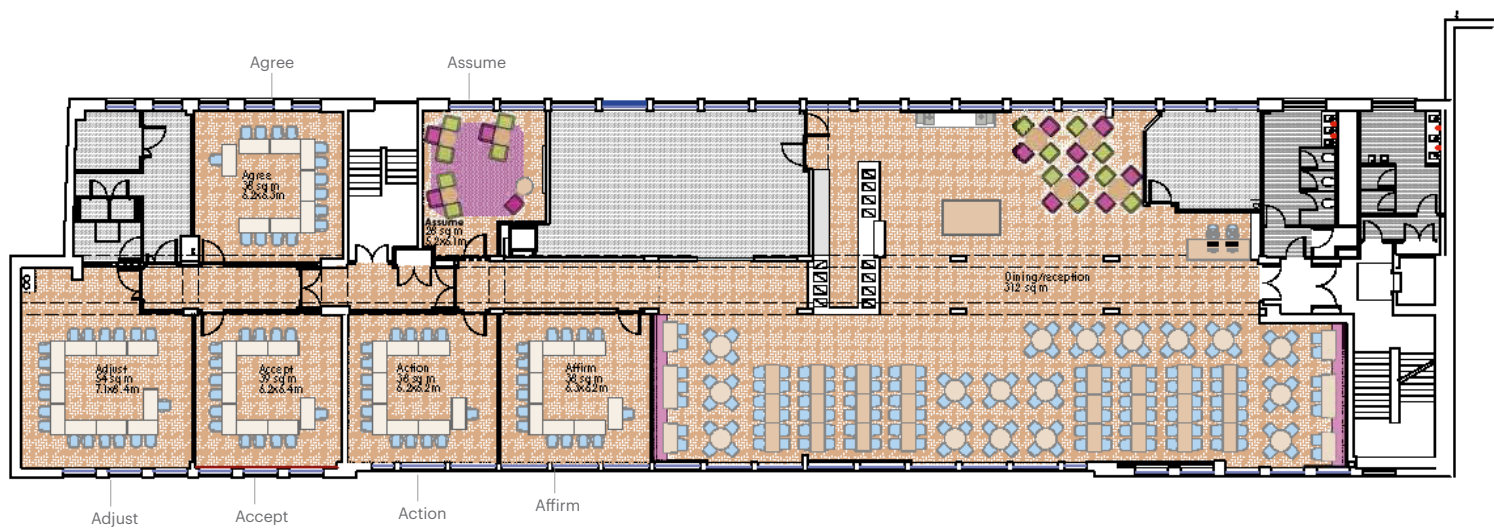


	AREA [ft²]	AREA [m²]	DIMENSIONS (m)	THEATRE	CRESCENT CABARET	U-SHAPE	CLASSROOM	BOARDROOM
<b>Challenge</b>	1582 ft²	147 m²	19 x 7.7 x 2.7	140	72	36	72	56
<b>Conduct</b>	366 ft²	34 m²	6.2 x 6.0 x 2.7	-	-	-	-	10
<b>Complete</b>	420 ft²	39 m²	6.3 x 6.2 x 2.7	40	20	18	24	20
<b>Converse</b>	581 ft²	54 m²	7.0 x 8.4 x 2.7	60	30	18	36	24
<b>Concur</b>	420 ft²	39 m²	6.2 x 6.5 x 2.7	40	20	16	24	20
<b>Confirm</b>	549 ft²	51 m²	8.3 x 6.2 x 2.7	50	30	18	32	26
<b>Check</b>	183 ft²	17 m²	4.2 x 4.2 x 2.7	-	-	-	-	8
<b>Change</b>	280 ft²	26 m²	6.3 x 4.2 x 2.7	-	12	10	-	12



Floorplan & Capacities

2ND FLOOR



	AREA [ft²]	AREA [m²]	DIMENSIONS (m)	THEATRE	CRESCENT CABARET	U-SHAPE	CLASSROOM	BOARDROOM
Assume	301 ft²	28 m²	5.2 x 6.1 x 2.7	-	-	-	-	8
Agree	409 ft²	38 m²	6.2 x 6.3 x 2.7	40	24	16	24	24
Adjust	581 ft²	54 m²	7.1 x 8.4 x 2.7	60	30	18	36	24
Accept	420 ft²	39 m²	6.2 x 6.4 x 2.7	40	20	16	24	20
Action	409 ft²	38 m²	6.2 x 6.2 x 2.7	40	20	16	24	20
Affirm	409 ft²	38 m²	6.3 x 6.1 x 2.7	40	20	16	24	20

## Floorplan & Capacities

### 3RD FLOOR



	AREA [m²]	AREA [ft²]	DIMENSIONS (m)	THEATER	CRESCENT CABARET	U-SHAPE	CLASSROOM	BOARDROOM
<b>React</b>	51 m²	549 ft²	8.4 x 6.1 x 2.7	50	30	20	32	24
<b>Respond</b>	64 m²	689 ft²	10.5 x 6.1 x 2.7	80	36	24	40	30
<b>Reply</b>	28 m²	301 ft²	5.2 x 6.1 x 2.7	-	-	10	10	12
<b>Resume</b>	39 m²	420 ft²	6.4 x 6.3 x 2.7	40	20	14	24	20
<b>Resource</b>	90 m²	969 ft²	13.4 x 6.5 x 2.7	100	50	34	50	38
<b>Represent</b>	51 m²	549 ft²	8.3 x 6.2 x 2.7	50	30	18	32	24
<b>Recreate</b>	38 m²	409 ft²	6.3 x 6.2 x 2.7	40	20	16	24	20
<b>Re-evaluate</b>	39 m²	420 ft²	6.3 x 6.2 x 2.7	40	20	16	24	20